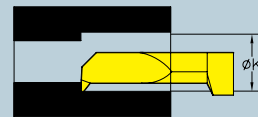
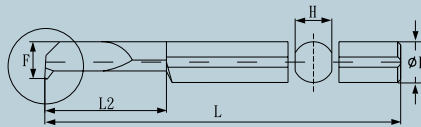
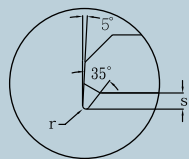


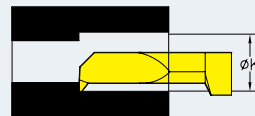
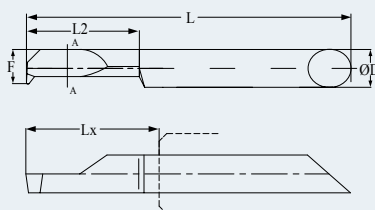
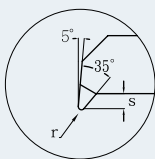
内徑車刀 Bore



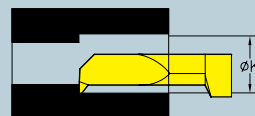
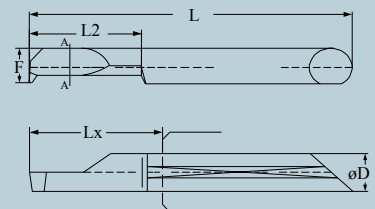
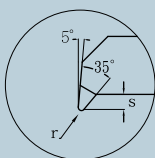
型號 EDP NO.	ØK	F	L2	L	r	S	ØD	適用套筒 Applicable Sleeve
27.3009-01	3	2.8	9.0	40	0.1	0.4	4	SP.250-04** SP.5650-04**
27.3015-01	3	2.8	15.0	45	0.1	0.4	4	
27.3021-01	3	2.8	21.0	52	0.1	0.4	4	
27.4012-01	4	3.8	12.0	42	0.1	0.7	4	
27.4012-02	4	3.8	12.0	42	0.2	0.7	4	
27.4020-01	4	3.8	20.0	50	0.1	0.7	4	
27.4020-02	4	3.8	20.0	50	0.2	0.7	4	
27.4028-01	4	3.8	28.0	60	0.1	0.7	4	
27.4028-02	4	3.8	28.0	60	0.2	0.7	4	
27.5015-01	5	4.8	15.0	50	0.1	1.0	6	SP.250-06** SP.5650-06**
27.5015-02	5	4.8	15.0	50	0.2	1.0	6	
27.5025-01	5	4.8	25.0	60	0.1	1.0	6	
27.5025-02	5	4.8	25.0	60	0.2	1.0	6	
27.5035-01	5	4.8	35.0	70	0.1	1.0	6	
27.5035-02	5	4.8	35.0	70	0.2	1.0	6	
27.6020-02	6	5.8	20.0	55	0.2	1.5	6	
27.6030-02	6	5.8	30.0	65	0.2	1.5	6	
27.6042-02	6	5.8	42.0	77	0.2	1.5	6	
27.7021-02	7	6.8	21.0	60	0.2	2.0	8	SP.250-08** SP.5650-08**
27.7035-02	7	6.8	35.0	75	0.2	2.0	8	
27.7049-02	7	6.8	49.0	90	0.2	2.0	8	
27.8025-02	8	7.8	25.0	65	0.2	2.0	8	
27.8040-02	8	7.8	40.0	80	0.2	2.0	8	
27.8056-02	8	7.8	56.0	100	0.2	2.0	8	
27.10030-02	10	9.8	30.0	75	0.2	2.5	10	SP.250-10** SP.5650-10**
27.10050-02	10	9.8	50.0	95	0.2	2.5	10	
27.10070-02	10	9.8	70.0	115	0.2	2.5	10	

内徑車刀 Bore

TW



ATW 内冷式



型號 EDP NO.	内冷式 型號 EDP NO.	ØK	F	L2	Lx	r	S	ØD	適用套筒 Applicable Sleeve
TW 27.3009-01	ATW 27.3009-01	3	2.8	9.0	11.0	0.1	0.4	4	SP.380-04**
TW 27.3015-01	ATW 27.3015-01	3	2.8	15.0	17.0	0.1	0.4	4	
TW 27.3021-01	ATW 27.3021-01	3	2.8	21.0	23.0	0.1	0.4	4	
TW 27.4012-01	ATW 27.4012-01	4	3.8	12.0	14.0	0.1	0.7	4	
TW 27.4012-02	ATW 27.4012-02	4	3.8	12.0	14.0	0.2	0.7	4	
TW 27.4020-01	ATW 27.4020-01	4	3.8	20.0	22.0	0.1	0.7	4	
TW 27.4020-02	ATW 27.4020-02	4	3.8	20.0	22.0	0.2	0.7	4	
TW 27.4028-01	ATW 27.4028-01	4	3.8	28.0	30.0	0.1	0.7	4	
TW 27.4028-02	ATW 27.4028-02	4	3.8	28.0	30.0	0.2	0.7	4	SP.380-05**
TW 27.5015-02	ATW 27.5015-02	5	4.8	15.0	17.0	0.2	1.0	5	
TW 27.5025-02	ATW 27.5025-02	5	4.8	25.0	27.0	0.2	1.0	5	
TW 27.5035-02	ATW 27.5035-02	5	4.8	35.0	37.0	0.2	1.0	5	SP.380-06**
TW 27.6020-02	ATW 27.6020-02	6	5.8	20.0	23.0	0.2	1.5	6	
TW 27.6030-02	ATW 27.6030-02	6	5.8	30.0	33.0	0.2	1.5	6	
TW 27.6042-02	ATW 27.6042-02	6	5.8	42.0	45.0	0.2	1.5	6	SP.380-08**
TW 27.7021-02	ATW 27.7021-02	7	6.8	21.0	24.0	0.2	2.0	8	
TW 27.7035-02	ATW 27.7035-02	7	6.8	35.0	38.0	0.2	2.0	8	
TW 27.7049-02	ATW 27.7049-02	7	6.8	49.0	52.0	0.2	2.0	8	SP.380-08**
TW 27.8025-02	ATW 27.8025-02	8	7.8	24.0	27.0	0.2	2.0	8	
TW 27.8040-02	ATW 27.8040-02	8	7.8	40.0	43.0	0.2	2.0	8	
TW 27.8056-02	ATW 27.8056-02	8	7.8	56.0	59.0	0.2	2.0	8	